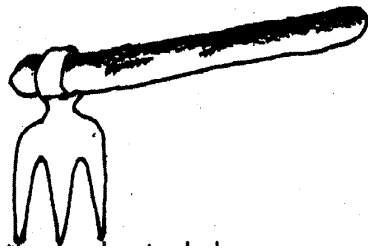
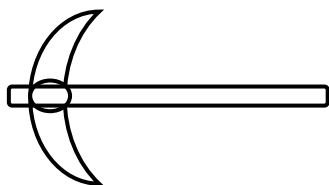


YUDESI DAY & BOARDING NURSERY & PRIMARY SCHOOL
P.4 INTEGRATED SCIENCE HOLIDAY PACKAGE TERM 1, 2020

1. Mention one condition needed for a metal to rust.
2. What is a nursery bed?
3. Name the garden tool used for harvesting banana.
4. How is transplanting different from weeding?
5. State the use of a tape measure to a farmer.
6. Give one example of a plant with fibrous root system.
7. What is the use of prop roots to a maize plant?
8. Give one example of a crop which under goes self-pollination.
9. In which one way do farmers care for crops?
10. What are monocotyledonous plants?
11. Differentiate between a seed and a fruit.
12. The diagram below is of a garden tool. Use it to answer the questions that follow.



12. What is the use of the above garden tool?
13. Why should metallic garden tool be painted?
14. Give one reason why land is prepared in the dry season.
15. How is rusting similar to germination?
16. What are viable seeds?
17. Name the garden tool drawn below.

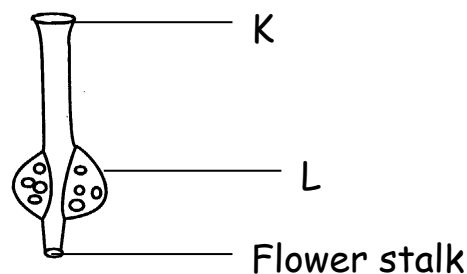


18. State one example of a crop grown in a nursery bed.
19. Give one advantage of a crop planted by broadcasting.
20. Draw the garden tool used for watering crops.

21. What is mulching?
22. Name the type of manure got from animal wastes, urine and decayed materials.
23. How is chlorophyll useful during photosynthesis?
24. Briefly explain the term pollination.
25. Why should a granary have rat guards?
26. State the use of endosperm to a maize grain.
27. Why should harvested crops be dried before storing?
28. Mention one danger of pests to crops.
29. What is crop rotation?
30. State one use of a hoe at home.
31. Give one example of weeds.
32. What is thinning?
33. Why should a farmer apply manure in his garden?
34. State the use of moisture to a germinating seed.
35. What is row planting?
36. In the space below, draw a garden tool used for cutting big trees during land preparation.
37. Give one reason for pruning plants.
38. Name the garden tool used for transporting manure and harvested crops in the garden.
39. Give one example of a perennial crop.
40. Give one example of a cash crop.

SECTION B:

- 41.a) Give two examples of fruit vegetables.
- b) Mention two examples of perennial crops.
- 42.a) Name the parts of a flower drawn below K and L.



b) Which part of a flower turns into seeds after fertilization?

43.a) State two examples of root tubers.

b) Give one use of flowers to;

i) plants ii) animals

44. Match correctly.

shovel	mixing manure
panga	pruning
garden fork	harvesting sugarcane
secateur	carrying seedlings

45.a) What are leguminous plants?

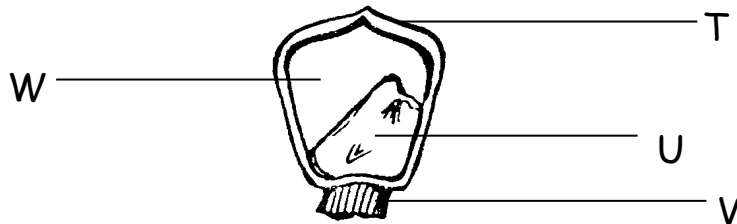
b) Give two examples of legumes.

c) How are legumes important to the soil?

46.a) Define the term germination.

b) Give three requirements for germination to take place.

Below is a maize grain, use it to answer the questions that follow.



a) Name the parts marked T and U.

b) Which of the labelled parts above stores food for the grain?

c) Give the function of part V.

48.a) What is weather?

b) Name two elements of weather.

c) Which weather instrument is used to measure the amount of rainfall received?

49. Name the parts of a flower which;

a) Produce pollen grains

b) Receive pollen grains

- c) Attracts insect pollinators
- d) Protects flower at bud stage

50.a) What is air?

b) Name the gas with the following percentage in the atmosphere.

- i) 0.03%
- ii) 0.97%
- iii) 78%

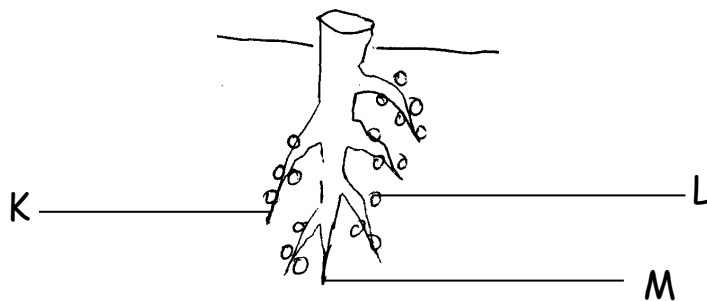
51.a) Why is carbon dioxide used in fire extinguishers?

- b) Name the gas which supports burning.
- c) Name two examples of dicots.

52.a) Define the term cross pollination.

- b) Give two examples of plants which undergo cross pollination.
- c) How is the anther head useful to a flower?

53. The diagram below shows a root system. Use it to answer the questions that follow.



- a) Which root system is drawn above?
- b) Name the parts marked L and M.
- c) Give the use of part marked L to the plant.

54.a) Give two uses of roots to;

- a) plants
- b) people

55.a) Give two characteristics of insect pollinated flowers.

- b) Give two types of seeds.